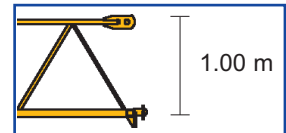
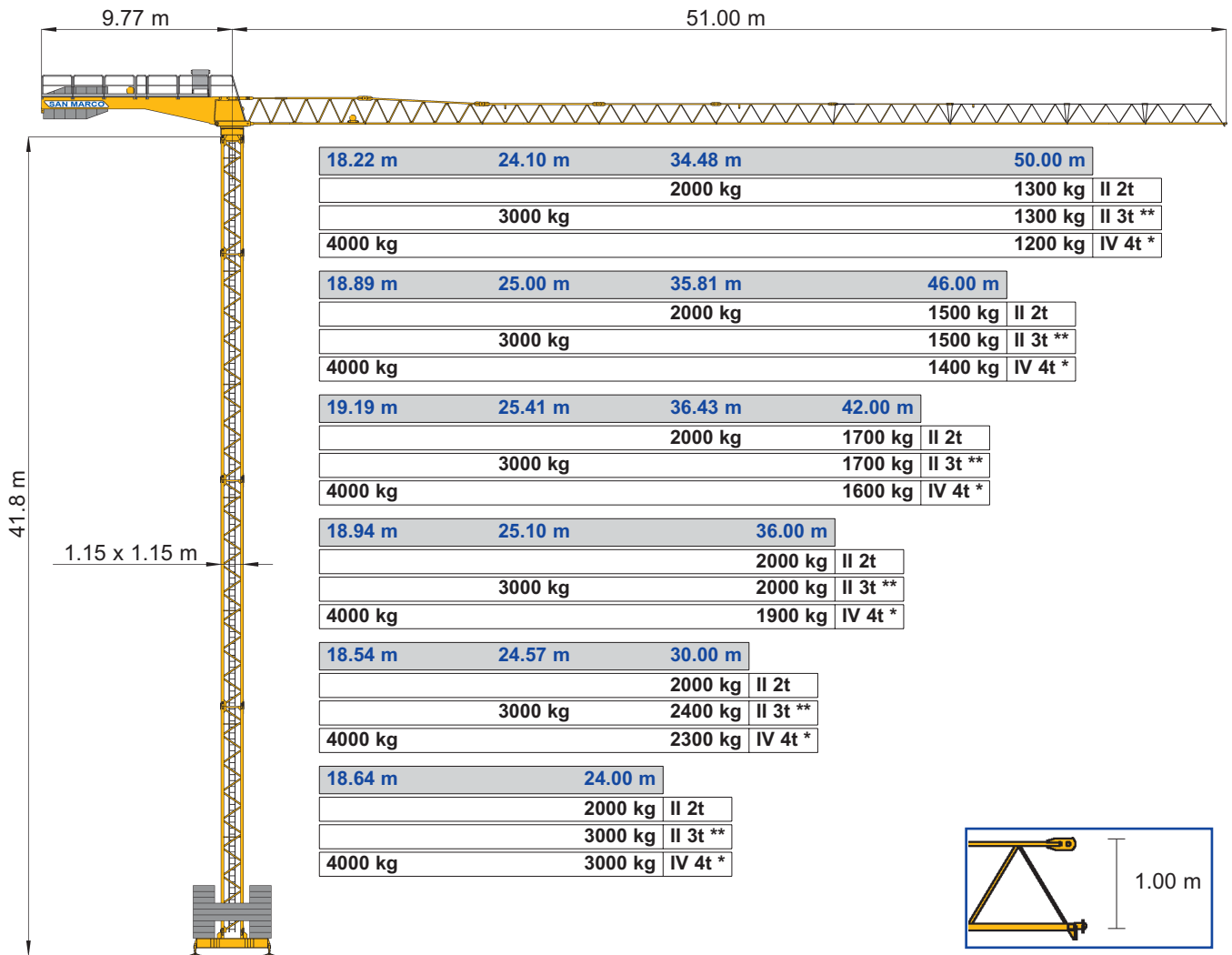


- IT** Gru a torre modulare - Versione City Crane
- UK** Modular tower crane - City Crane Version
- RU** Кран башенный с модульным монтажем версии - Сити Кран

SMT 501

Triverter 444



- IT** Diagrammi di carico
- UK** Loads diagrams
- RU** Диаграмма нагрузки

	m	16	18	20	22	24	26	28	30	32	34	36	38	40	42	44	46	48	50	m	
t	2.00	2.00	2.00	2.00	2.00	2.00	2.00	2.00	2.00	2.00	2.00	1.90	1.79	1.68	1.59	1.51	1.43	1.36	1.30	50	
	2.00	2.00	2.00	2.00	2.00	2.00	2.00	2.00	2.00	2.00	2.00	1.98	1.86	1.76	1.66	1.57	1.50			46	
	2.00	2.00	2.00	2.00	2.00	2.00	2.00	2.00	2.00	2.00	2.00	2.00	1.90	1.79	1.70					42	
	2.00	2.00	2.00	2.00	2.00	2.00	2.00	2.00	2.00	2.00	2.00	2.00	2.00	2.00	2.00						36
t	3.00	3.00	3.00	3.00	3.00	2.75	2.53	2.34	2.18	2.03	1.90	1.79	1.69	1.59	1.51	1.43	1.36	1.30		50	
	3.00	3.00	3.00	3.00	3.00	2.87	2.64	2.44	2.27	2.12	1.99	1.87	1.76	1.66	1.58	1.50				46	
	3.00	3.00	3.00	3.00	3.00	2.92	2.69	2.49	2.31	2.16	2.02	1.90	1.79	1.70						42	
	3.00	3.00	3.00	3.00	3.00	2.88	2.65	2.45	2.28	2.13	2.00										36
t	4.00	4.00	3.59	3.22	2.92	2.66	2.44	2.25	2.08	1.93	1.81	1.69	1.59	1.49	1.41	1.33	1.26	1.20		50	
	4.00	4.00	3.74	3.36	3.04	2.77	2.54	2.35	2.17	2.02	1.89	1.77	1.66	1.56	1.48	1.40				46	
	4.00	4.00	3.81	3.42	3.10	2.82	2.59	2.39	2.22	2.06	1.92	1.80	1.69	1.60						42	
	4.00	4.00	3.76	3.37	3.05	2.78	2.55	2.35	2.18	2.03	1.90										36
t	4.00	4.00	3.67	3.29	2.98	2.71	2.49	2.30													30
	4.00	4.00	3.69	3.31	3.00																24

Tiro in II 2000 kg
Single wiring 2000 kg
Двойная запасовка 2000 kg



Tiro in II 3000 kg**
Single wiring 3000 kg
Двойная запасовка 3000 kg



Tiro in IV inserito*
Connected double wiring
Четверная запасовка подключенная



* A richiesta
On request
** по требованию



DIN 15018 H1 B3
ISO 4301



